



RAKA Design

BIM PORTFOLIO

www.raka-design.net





Introduction

- ✔ International multi-disciplinary firm providing consulting services in all engineering disciplines.
- ✔ Established in Cairo in 2009.
- ✔ Part of Innovators Consulting engineers, more than 25 years of expertise on an int. level.
- ✔ RAKA is involved in 1 Billion US Dollars projects' value annually.
- ✔ Having a strong portfolio of significant and prestigious projects from infrastructure to high rise office buildings, hotels, residential complexes, healthcare and educational institutions, and both governmental and commercial projects.
- ✔ Successfully conducted projects with international design & Engineering firms through a long-term JV and partnerships, such as ABV ROCK GROUP LTD in Sweden, POLYRYTHMIC ARCHITETURE in Bordeaux, France, and Buchan Design Group in Australia.



Sister Companies

ABV ROCK GROUP



INNOVATORS
CONSULTING ENGINEERS





RAKA
Design

REVIT PROJECTS

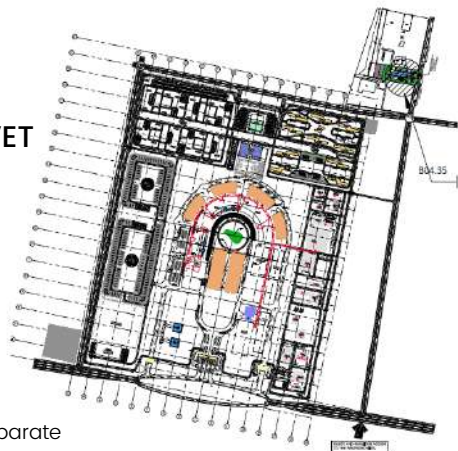


B4.35

OWNER: MINISTRY OF INTERIOR, KSA

CONTRACTOR: ABV ROCK GROUP, KSA

**SCOPE OF WORK: SHOP DRAWING + RIVET
MODLE LOD300**



The building has been located in the northern side with separate parking and entry/exit to the building will be through manned gate house.

The guest apartment building will be a high rise building (Ground + mezzanine + 6 floors + roof). It will be located outside the SFMC-Jeddah site, about 300m on the northern side.

B4.35

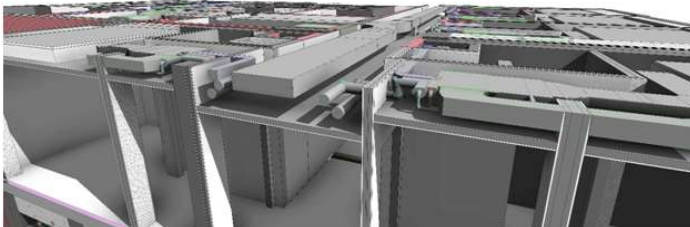
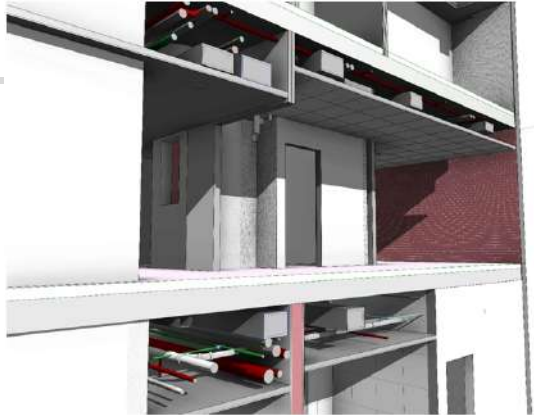
The building will serve as a guest accommodation for the MOI male visitors, to the standards of a mid-range hotel. However, two female toilets are provided, one at the dining and another at conference area, for any female visitors during conferences and meetings.

The building consists of a central core that accommodates the vertical circulation as well as floor services (electrical rooms, telecom closets, etc.). Three staircases have been provided at each floor and will serve as fire stairs. Adequate space has been allocated for housekeeping at all floors.



B4.35

Revit Shots



ARD AL BAHR

OWNER: HMA ENGINEERING, KSA

**CONTRACTOR: TENDER DRAWINGS +
RIVET MODLE 300**

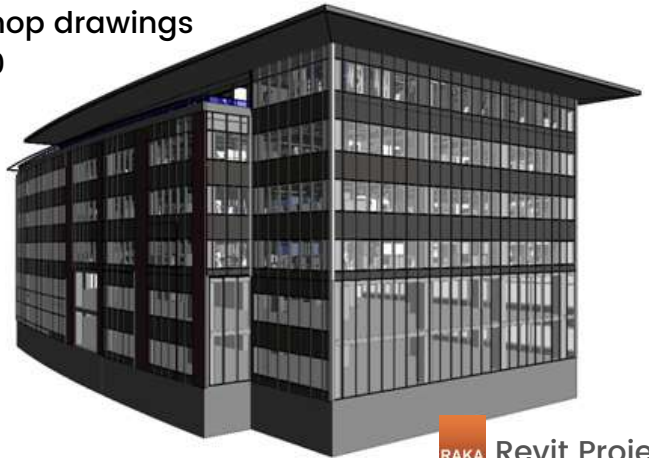


The building located in the KSA with separate parking
The building consist of
(Ground + 3 floors + roof).

MENTOR GRAPHICS

OWNER: Mentor Graphics, Cairo

Scope of Work: Architectural,
MEP& interior design Shop drawings
+ RIVET MODLE LOD 400



MENTOR GRAPHICS

Cairo festival city is a visionary mixed-use urban community, strategically located 15 min. from Cairo international airport at the western edge of new Cairo city, near the districts of MAADI to the south and Heliopolis, Nasr city to the west.

located at the intersection of Cairo's ring road and the TESEE'N road the main spine and gateway of new Cairo city, cfc features Egypt first combined indoor –outdoor retail and entertainment develop with spectacular luxurious residential communities, prime office spaces.



SAAF

OWNER: SAAF JEDDAH DEVELOPMENT COMPANY, KSA

SOCPE OF WORK: Architectural, MEP& interior design

TENDER DRAWINGS + RIVET MODLE LOD 200

PROJECT AREA: 83,512.93m2



SAAF





Clients

Affiliated Companies



ABV ROCK GROUP LTD



MIDROC



THE BUCHANAN GROUP
MELBOURNE



POLY RHYTHMIC
ARCHITECTES
INGÉNIEURS



INNOVATORS
DESIGN & POLYMER

Clients



SECTORS
CONSTRUCTION



GSEEC



1977



المبتكر
AL ABDULKARIM



جامعة الملك فهد
King Fahd University



Al Anasir Holding
Specialized Investment Co.



جامعة الملك فيصل
KING FAHD UNIVERSITY



جامعة الملك فهد
King Fahd University



DAR AL-QADIRI
Infrastructure & Environment



جامعة الملك فهد
King Fahd University



مؤسسة فيصل
King Faisal Foundation



eci



SAMCRETE



Aida Investment Group



جامعة الملك فهد
King Fahd University



جامعة الملك فهد
King Fahd University



جامعة الملك فهد
King Fahd University



ENGINEERING CONSULTANTS
Specialized Investment Co.



سبماكو الدولية
SPMRCO



RAKA
DESIGN

www.raka-design.net